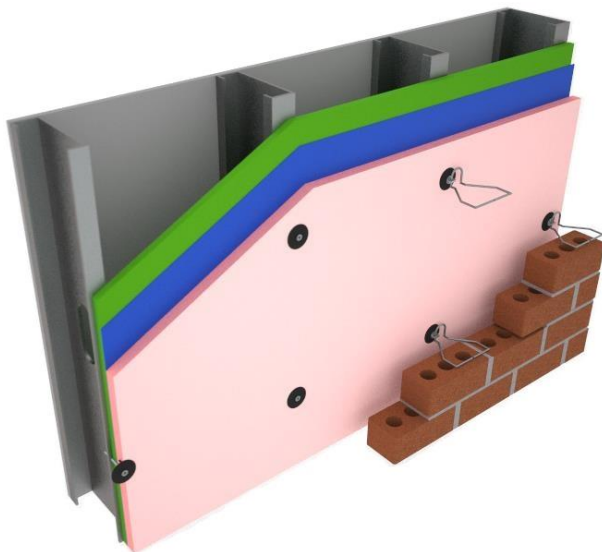


RODENHOUSE

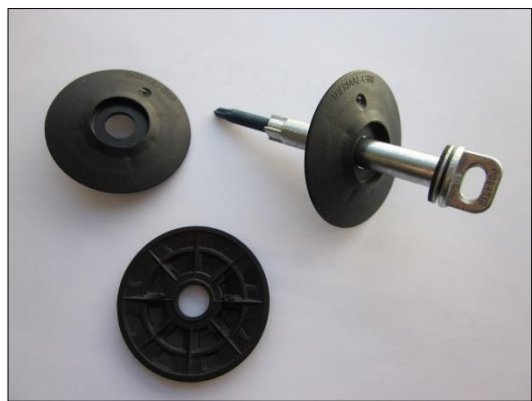


Fastening Systems



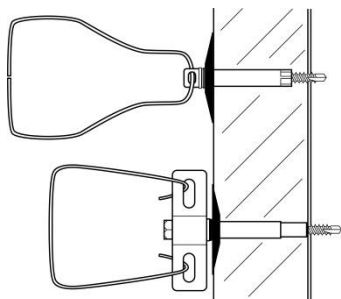
Thermal-Grip® Brick Tie washer

Use with barrel style brick ties to attach rigid insulation including extruded polystyrene (XPS), polyisocyanurate (polyiso), expanded polystyrene (EPS), mineral/rock wool, etc.



SPECS:

- 2" diameter
- Pre-spotting prongs
- Flattens on surface of insulation
- Carbon Black UV stabilizers
- Rigid insulation manufacturer approved
- Flexible perimeter compresses on surface and reduces tearing
- Stiffened center "Bullseye" ring prevents fastener pull-through



Rodenhouse Inc.
974 Front NW #100
Grand Rapids, MI 49504
(T) 616-454-3100
(F) 616-454-0404
www.rodenhouse-inc.com

