



\*EZ-Driver Chuck Adaptor

**RODENHOUSE**



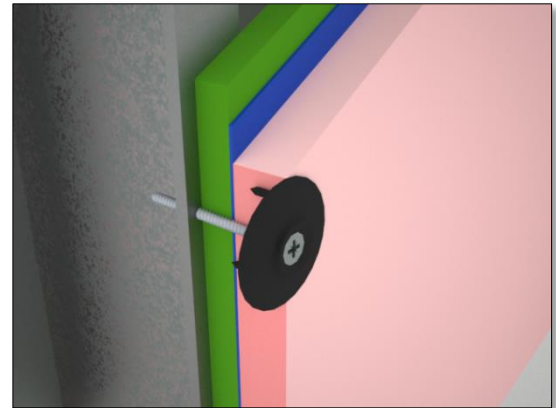
**Fastening Systems**



\*Bullseye® Auto-feed System

# Thermal-Grip® ci prong washer

Use with Grip-Deck® screws/fasteners to attach rigid insulation including extruded polystyrene (XPS), polyisocyanurate (polyiso), expanded polystyrene (EPS), mineral/rock wool, etc.



## **SPECS:**

- 2" diameter
- Pre-spotting prongs
- Carbon Black UV stabilizers
- Flattens on surface of insulation
- Compatible with nails and screws
- Rigid insulation manufacturer approved
- Flexible perimeter compresses on surface and reduces tearing
- Stiffened center "Bullseye" ring prevents fastener pull-through



Rodenhouse Inc.  
974 Front NW #100  
Grand Rapids, MI 49504  
(T) 616-454-3100  
(F) 616-454-0404  
[www.rodenhouse-inc.com](http://www.rodenhouse-inc.com)

