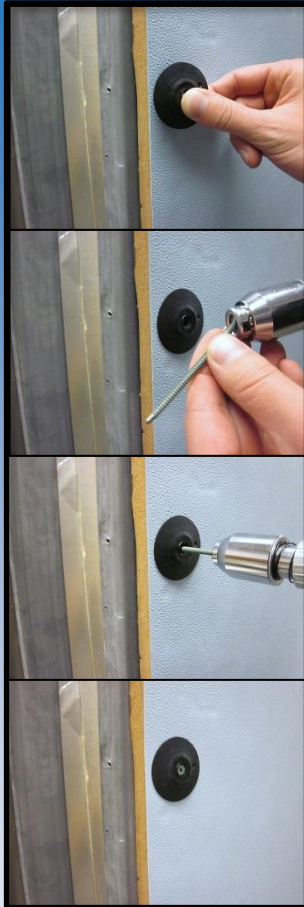


Fastening Systems for Dow® Continuous Insulation (ci)

Thermal-Grip® ci Prong washers & Grip-Deck® screws



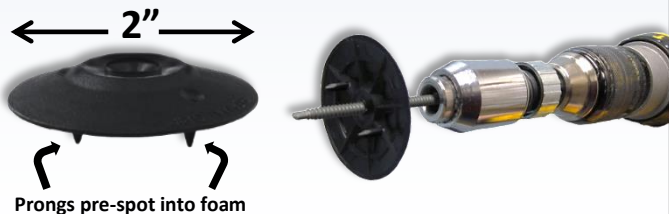
**Pre-spotting prongs
for on-the-wall
screw assembly**

**EZ-driver
prevents screw
wobble & overdrive**

**Grip-Deck®
ceramic coated
screws for corrosion
protection**

**Solid Cap Design
helps seal out air
and moisture**

- 2" diameter
- Carbon black UV stabilizers
- Flattens on surface of insulation
- Specified for use with Thermax® ci & Xarmor™ & Ultra SL



Grip-Lok® Auto-feed fastening system with Bullseye® adaptor

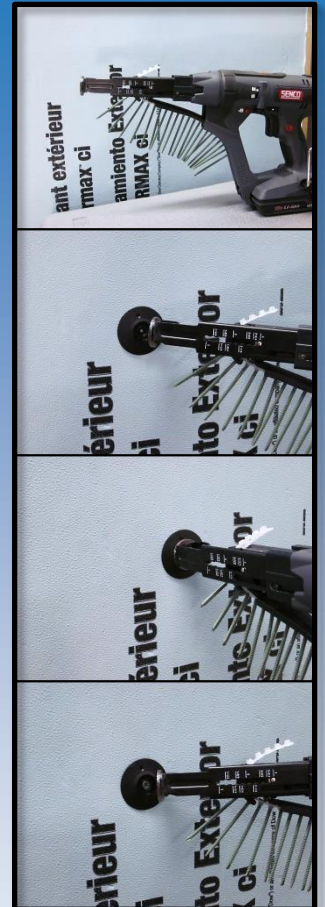
**Bullseye® centers
tool for rapid
attachment**

**Significantly
reduces installed
labor costs**

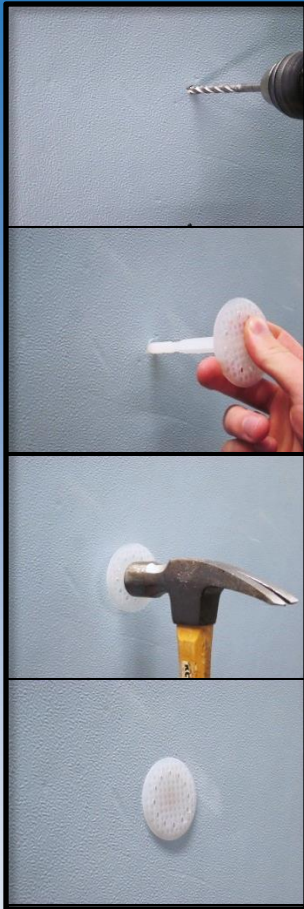
**Adjustable depth
control prevents
overdrive**

**Manufacture
tested,
recommended,
and approved**

- Available with 18V Li-ion battery or corded
- Bullseye® adaptor has magnets for use with Grip-Plate® lath washer
- For use with up to 3" long Grip-Deck® screws



Plasti-Grip® PMF
For concrete/masonry substrates



Easy Installation

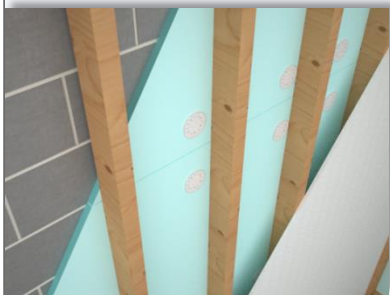
**Pre-drill with
5/16" masonry bit**

**Tap flush with
hammer**

**Prevents thermal-
bridging**

**No screws or
adhesives required**

- 2" PMF for insulation thickness of 1/2"-3/4"
- 2 3/4" PMF for insulation thickness of 1" - 1 1/2"
- 3 1/2" PMF for insulation thickness of 1 1/2" - 2"
- 4 1/2" PMF for insulation thickness of 2 1/2" - 3"
- 5 3/8" PMF for insulation thickness of 3 1/2" - 4"
- 6 1/4" PMF for insulation thickness of 4 1/4" - 5"



Thermal-Grip®
washers for barrel-style brick-ties

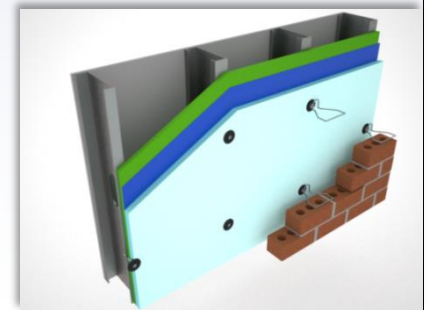
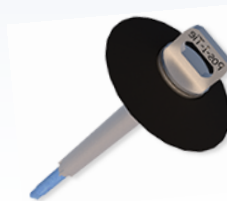
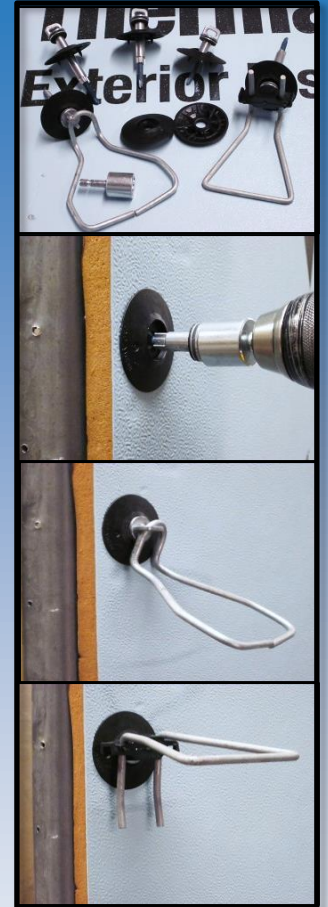
**For use with
Pos-I-Tie® or
other barrel style
veneer anchors**

**Solid Cap Design
helps seal out air
and moisture**

**Reduces number
of fasteners
required**

**Use Thermal-
Clip® with Pintle
Wire Tie to create
thermal break**

- Available with Triangle or Pintle style wire ties
- Self-drilling screw tip for steel studs or coarse screw tip for wood/masonry applications
- Specified for use with Thermax® ci & Xarmor™ & Ultra SL



RODENHOUSE

Fastening Systems

974 Front NW #100
Grand Rapids, MI 49504
1- 800-249-4747
(T) 616-454-3100
(F) 616-454-0404

gripline@rodenhouse-inc.com
www.rodenhouse-inc.com

*patented or patent pending



Dow
Thermax 
Exterior Insulation

DOW Building Solutions
2030 Dow Ctr.
Midland, MI 48674
(T) 989-636-1000

www.building.dow.com

™ Trademark of The Dow Chemical Company