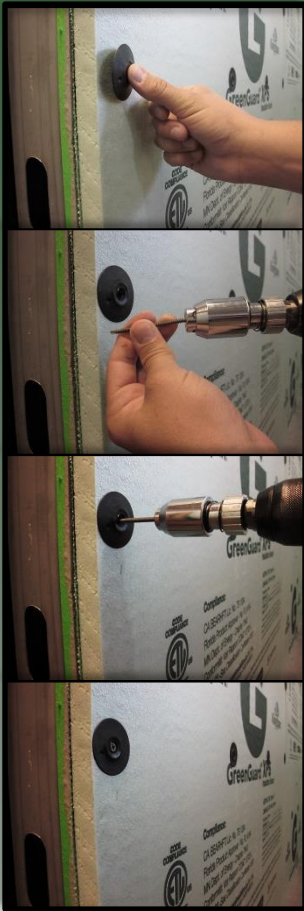


Fastening Systems for Kingspan® GreenGuard® Extruded Polystyrene Insulation (XPS)

Thermal-Grip® ci Prong washers & Grip-Deck® screws



Pre-spotting prongs for on-the-wall screw assembly

EZ-driver prevents screw wobble & overdrive

Grip-Deck® ceramic coated screws for corrosion protection

Solid Cap Design helps seal out air and moisture

- 2" diameter
- Carbon black UV stabilizers
- Flattens on surface of insulation
- Compatible with nails and screws
- Specified for use with Kingspan® GreenGuard®

← 2" →



Prongs pre-spot into foam



Grip-Lok® Auto-feed fastening system with Bullseye® adaptor

Bullseye® centers tool for rapid attachment

Significantly reduces installed labor costs

Adjustable depth control prevents overdrive

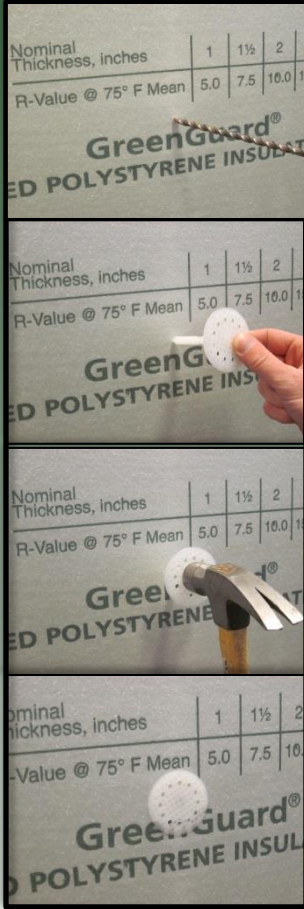
Manufacture tested, recommended, and approved



- Available with 18V Li-ion battery or corded
- Bullseye® adaptor has magnets for use with Grip-Plate® lath washer
- For use with up to 3" long Grip-Deck® screws



Plasti-Grip® PMF For concrete/masonry substrates



Easy Installation

**Pre-drill with
5/16" masonry bit**

**Tap flush with
hammer**

**Prevents thermal-
bridging**

**No screws or
adhesives required**

- 2" PMF for insulation thickness of ½"-¾"
- 2 ¾" PMF for insulation thickness of 1" - 1 ½"
- 3 ½" PMF for insulation thickness of 1 ½" - 2"
- 4 ½" PMF for insulation thickness of 2 ½" - 3"
- 5 ¾" PMF for insulation thickness of 3 ½" - 4"
- 6 ¼" PMF for insulation thickness of 4 ¼" - 5"



Thermal-Grip® washers for barrel-style brick-ties

**For use with
Pos-I-Tie® or
other barrel style
veneer anchors**

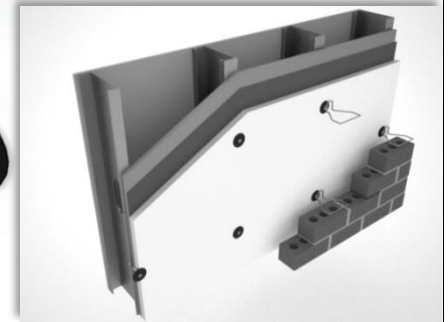
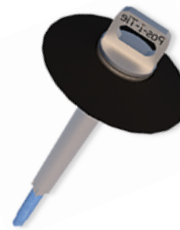
**Solid Cap Design
helps seal out air
and moisture**

**Reduces number
of fasteners
required**

**Use Thermal-
Clip® with Pintle
Wire Tie to create**



- Available with Triangle or Pintle style ties
- Self-drilling screw tip for steel studs or coarse screw tip for wood/masonry applications
- Specified for use with Kingspan® GreenGuard®



RODENHOUSE
Fastening Systems

974 Front NW #100
Grand Rapids, MI 49504
1- 800-249-4747
(T) 616-454-3100
(F) 616-454-0404

gripline@rodenhouse-inc.com
www.rodenhouse-inc.com

*patented or patent pending



MADE IN USA

Kingspan

Kingspan Insulation, LLC
2100 RiverEdge Parkway,
Suite 175
Atlanta, GA 30328
1-800-241-4402

www.kingspaninsulation.us