



Fastening Systems for Ener-Air™ & Enerfoil™ Continuous Insulation



Thermal-Grip® ci Prong washers & Grip-Deck® screws



Pre-spotting prongs for on-the-wall screw assembly



EZ-driver prevents screw wobble & overdrive

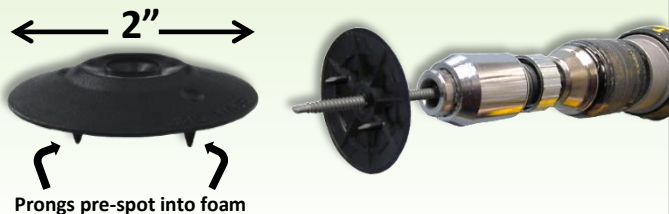


Grip-Deck® ceramic coated screws for corrosion protection



Solid Cap Design helps seal out air and moisture

- 2" diameter
- Carbon black UV stabilizers
- Flattens on surface of insulation
- Compatible with nails and screws
- Specified for use with Ener-Air™ & Enerfoil™



Grip-Lok® Auto-feed fastening system with Bullseye® adaptor

Bullseye® centers tool for rapid attachment



Significantly reduces installed labor costs



Adjustable depth control prevents overdrive



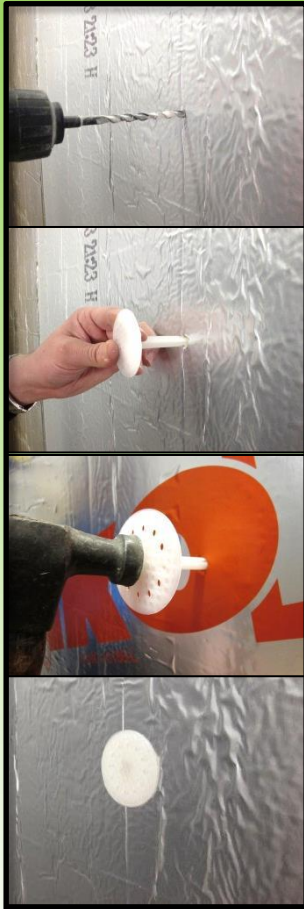
Manufacture tested, recommended, and approved



- Available with 18V Li-ion battery or corded
- Bullseye® adaptor has magnets for use with Grip-Plate® lath washer
- For use with up to 3" long Grip-Deck® screws



Plasti-Grip® PMF
For concrete/masonry substrates



Easy Installation

**Pre-drill with
5/16" masonry bit**

**Tap flush with
hammer**

**Prevents thermal-
bridging**

**No screws or
adhesives required**

- 2" PMF for insulation thickness of 1/2" - 3/4"
- 2 3/4" PMF for insulation thickness of 1" - 1 1/2"
- 3 1/2" PMF for insulation thickness of 1 1/2" - 2"
- 4 1/2" PMF for insulation thickness of 2 1/2" - 3"
- 5 3/8" PMF for insulation thickness of 3 1/2" - 4"
- 6 1/4" PMF for insulation thickness of 4 1/4" - 5"



Thermal-Grip®
washers for barrel-style brick-ties

**For use with
Pos-I-Tie® or
other barrel style
veneer anchors**

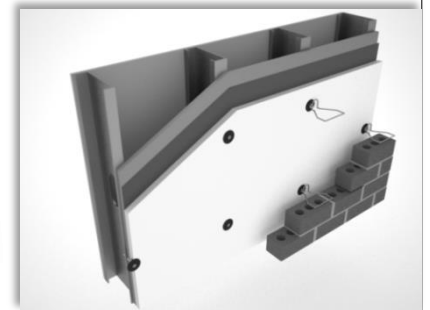
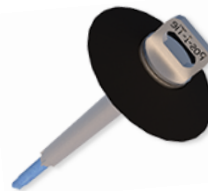
**Solid Cap Design
helps seal out air
and moisture**

**Reduces number
of fasteners
required**

**Use Thermal-
Clip® with Pintle
Wire Tie to create
thermal break**



- Available with Triangle or Pintle style ties
- Self-drilling screw tip for steel studs or coarse screw tip for wood/masonry applications
- Specified for use with Ener-Air™ & Enerfoil™



974 Front NW #100
Grand Rapids, MI 49504
1- 800-249-4747
(T) 616-454-3100
(F) 616-454-0404

gripline@rodenhouse-inc.com
www.rodenhouse-inc.com

*patented or patent pending



IKO Inc.
1600 - 42nd Ave SE
Calgary, AB T2G 5B5
(T) 403-265-6022
(F) 613-631-1369

www.iko.com