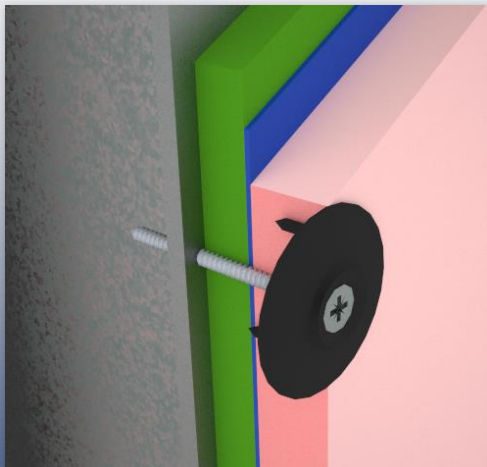


Fastening Solutions for:

Continuous Insulation (ci)

EIFS / Stucco

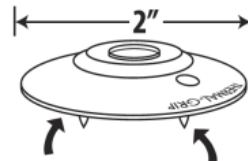
Building Wrap



Thermal-Grip® ci prong washers w/ Grip-Deck® ci screws

- ⊕ Tested & specified for air-barrier assemblies over steel or wood studs

Labor saving prongs for on-the-wall screw assembly!

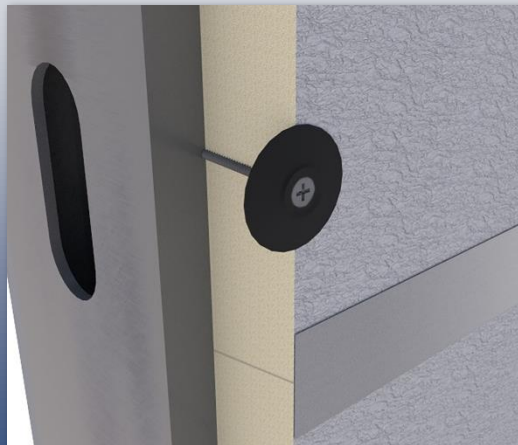


PRONGS PRE-SET INTO FOAM



Grip-Deck® ci screws:

- ⊕ Lengths of: 1 1/4" – 6" coarse or self-drilling
- ⊕ Corrosion resistant ceramic coating
- ⊕ Bulk or collated for Grip-Lok® auto-feed system



Labor saving tools!

Grip-Lok® auto-feed system w/ Bullseye® nose adaptor



EZ-Driver chuck adaptor

- ⊕ No wobble
- ⊕ No overdrive
- ⊕ Fits any drill



CenterFire® insulation cutting solutions

- ⊕ Cuts virtually dust free
- ⊕ Factory edge quality cuts
- ⊕ EPS, XPS, ISO, etc



7" straight



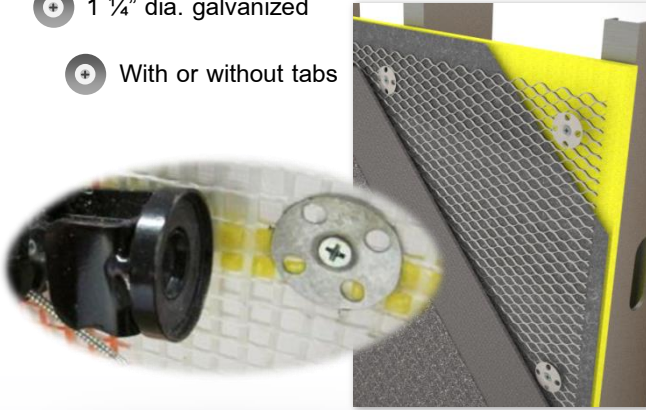
7.25" & 10" dia.



Shut-N-Cut

Grip-Plate® lath washers

- ⊕ For lath attachment over rigid insulation
- ⊕ 1 ¼" dia. galvanized
- ⊕ With or without tabs



Plasti-Grip® ci prong washers

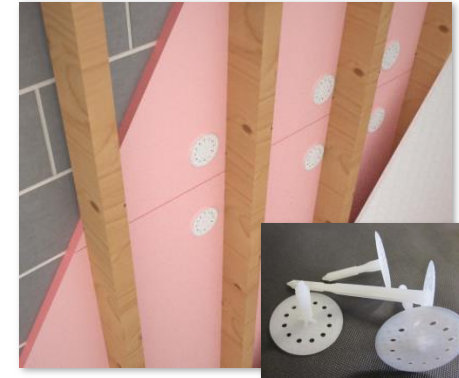
Labor saving prongs for on-the-wall screw assembly!

- ⊕ UV inhibitors
- ⊕ 1 ¾" dia. flexible design
- ⊕ EIFS (PM) or continuous insulation (ci)



Plasti-Grip® PMF anchors

FAST!
Drill & hammer



- ⊕ Rigid insulation to masonry
- ⊕ Solid plastic design = NO thermal-bridging!

Pos-I-Tie® brick-veneer anchors & Thermal-Grip® brick-tie washers

- ⊕ Reduces thermal-bridging
- ⊕ Air-barrier sealing washers



Plasti-Grip® PBLP2 prong washers

Labor saving prongs for on-the-wall screw assembly!

- ⊕ 2" dia. for polymer based (PB) EIFS
- ⊕ System manufacturer approved
- ⊕ Available with or without prong



Building wrap attachment

1 ¾" Plasti-Grip® CBW
Flexible design with keyholes



2" Thermal-Grip® flat
Solid cap design w/ UV inhibitor



2" Thermal-Break™ impaling
Attaches building wrap & insulation.
Reduces penetrations & thermal-bridging.



974 Front NW #100
Grand Rapids, MI 49504
1-800-249-4747
(T) 616-454-3100
(F) 616-454-0404



www.rodenhouse-inc.com