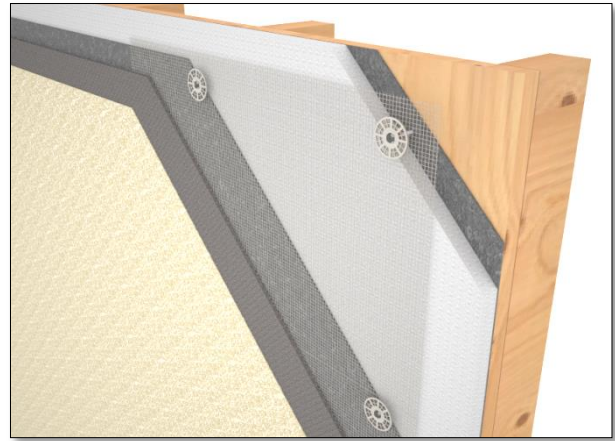


RODENHOUSE



Fastening Systems



System Manufacturer Approved

Plasti-Grip® PBLP2 prong washer

Use with Grip-Deck® screws to attach EPS or XPS foam in polymer based (PB) EIFS systems.



SPECS:

- 2" diameter washer with keyholes for basecoat bonding
- Thermal-break design; screw head is recessed from basecoat
- Prong enables on-the-wall screw assembly
- Achieve **labor savings** as **pre-assembly of screws is not required!**
- Recommended for use with Grip-Deck® screws
- Made in USA



Rodenhouse Inc.
974 Front NW #100
Grand Rapids, MI 49504
(T) 616-454-3100
(F) 616-454-0404
www.rodenhouse-inc.com

