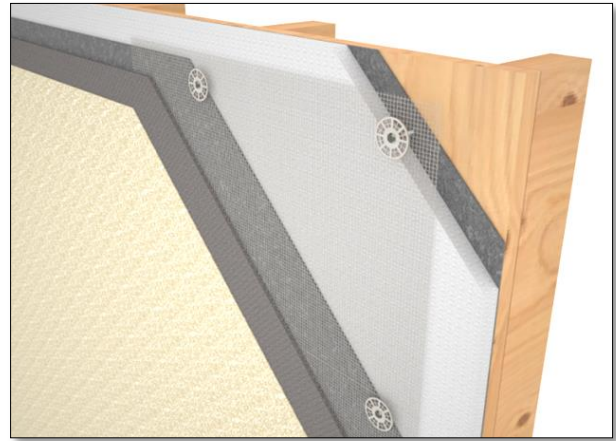


RODENHOUSE



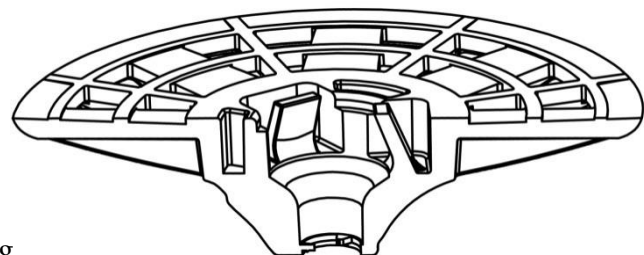
Fastening Systems



System Manufacturer Approved

Plasti-Grip® PBLP2 washer

Use with Grip-Deck® screws to attach EPS or XPS foam in polymer based (PB) EIFS systems.



SPECS:

- 2" diameter plastic washer
- Low profile design (1/2" overall thickness)
- Tighten just below the surface for proper rasing
- Plastic tabs encapsulate screw head creating a thermal-break



*Available pre-assembled



Rodenhouse Inc.
974 Front NW #100
Grand Rapids, MI 49504
(T) 616-454-3100
(F) 616-454-0404
www.rodenhouse-inc.com

